

Aluminium panel instrument case

now available in 144 x 96 mm

- high stability due to all-over aluminium profile
- well suited for EMC shielding due to conductive coating
- as an alternative to the removable plastic front frame, a transparent door from our standard product line can also be attached.
- as an alternative to mounting with fixing clamps, two mounting plates with pins can be pushed into the groove. (not included in delivery)

Material:

Enclosure/Mounting profile: Aluminium

Frame: Zinc die-cast

Front panel/ rear panel:

Aluminium sheet 2,5 mm

Front frame: plastic

Surface:

Enclosure: outside lacquered RAL 9005 deep black, inside chromated

Mounting profile: anodised

Frame: conductive coating

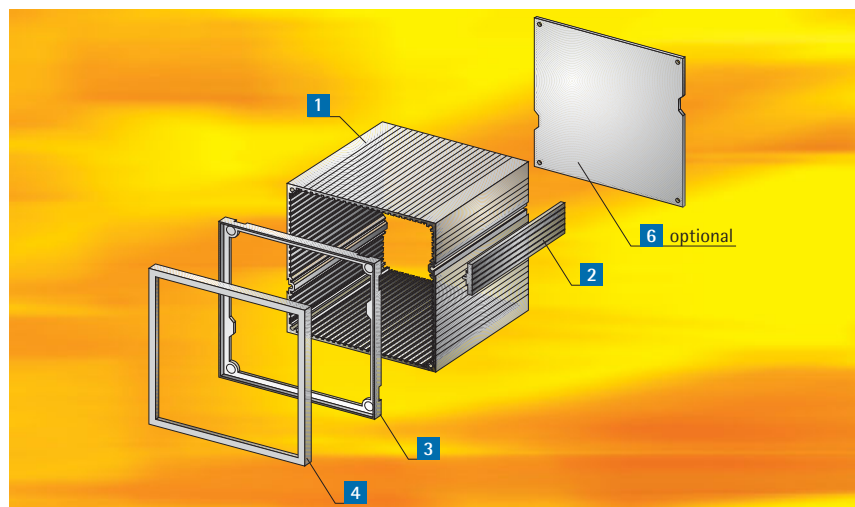
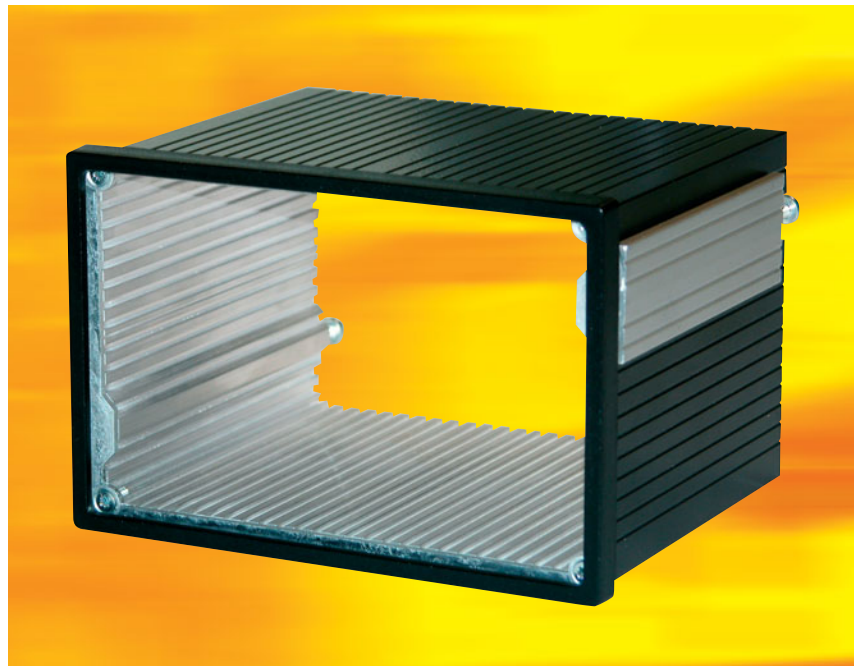
Front panel/ rear panel:

outside anodised, inside chromated

Other dimensions, colours or individual treatment on request. Please order front and rear panel separately!

Included in delivery

| Item | Pc. | Description |
|------|-----|---------------------|
| 1 | 1 | Enclosure extrusion |
| 2 | 2 | Mounting extrusion |
| 3 | 1 | Zinc die-cast frame |
| 4 | 1 | Plastic front frame |
| 5 | | Assembly material |



Order information 144 x 96 mm (W x H)

| Depth mm | Enclosure | Front panel 6 | Rear panel 6 | Sealing between enclosure and instrument panel | Sealing between front panel and enclosure |
|----------|------------|---------------|--------------|--|---|
| 60,5 | 442-320-00 | 442-330-00 | 442-333-00 | 442-335-01 | 442-335-02 |
| 82,5 | 442-321-00 | | | | |
| 116,5 | 442-322-00 | | | | |
| 138,5 | 442-323-00 | | | | |
| 107,0 | 442-324-00 | | | | |
| 163,0 | 442-325-00 | | | | |
| 209,0 | 442-326-00 | | | | |

apra-norm Elektromechanik GmbH · Dept. RADAPLAST

Gewerbegebiet · D-54552 Mehren/Vulkaneifel

Phone: +49 (0) 65 92 20 4-0 · Fax: +49 (0) 65 92 20 4-100

sales@apra.de · www.apra-norm.com

Subject to technical modifications.

10.06.2009

101